

STOKE ASH & THWAITE

Harvest & Holidays



August & September
Newsletter
2023

GOOD MORNING!

Breakfast served until 11am every day

Full English Breakfast

Fried egg, rasher of butcher's bacon, sausage, mushroom,
tomato, baked beans, hash brown, fried bread

Includes all items from the buffet

£11.95

Vegetarian Breakfast

Two fried eggs, baked beans, two hash browns, mushroom,
tomato, fried bread

Includes all items from the buffet

£11.95

Smoked Mackerel

With Scrambled Eggs

Includes all items from the buffet

£9.95

Four Egg Omelette

Plain or with cheese, bacon or mushrooms

Includes all items from the buffet

£9.95

Breakfast Brioche Bap served with two hash browns

Choose from Bacon, Sausage, Egg

Includes all items from the buffet

From

£9.95

Continental Buffet Only (per person)

Please help yourself from the breakfast buffet

Under 12's

£7.95

£5.95

Porridge Made with Jumbo Oats

served with maple syrup

£3.20

Specialty Coffees

£2.95

Toast and Preserves

Thick sliced bread with Tiptree Marmalade & Jam

£2.95



Contact List of Organizations for Stoke Ash & Thwaite

Editor	Gordon Leggett	01379 678450
Advertising	Ken Smith	01379 678197
Garden Club Thwaite	George Parnell	01449 768686
Veggie Plotters	George Parnell	01449 768686
Garden Club Stoke Ash	Lionel Coe	01379 678463
Knit, Craft & Natter	Jacqui Lawrence	01449 768116
Revd Julia Lall	Email: rev.julialall@gmail.com	
S/Ash Social Club	Ellen Stannard	01379 678646
	& Lionel Coe	01379 678463
Women's Institute (Secretary)	Pam Cooke	01379 678100
S/Ash Village Hall (bookings)	Brenda Lock	01379 678383
Management Committee	Geoff Tancred	01379 678568
Thwaite 50 Lottery Club	Christine Maisey	01379 730072
	Email: maisey686@gmail.com	

Stoke Ash & Thwaite has 7 Parish Councillors.

If you wish to raise any matters concerning the villages you can do so by attending Parish Council meetings posted on the Parish Council notice board and website or by directly contacting one of the councillors or the Stoke Ash & Thwaite Parish clerk Lynne Cockerton on 01728 862001 lynne.cockerton@btopenworld.com

Stoke Ash & Thwaite Parish Councillors

Cllr Tony Pulham (chair)	07850 385914	tony@hpf ltd.co.uk
Cllr Val Lane	01379 678568	vallane2002@yahoo.com
Cllr Gordon Leggett (vice chair)	01379678450	gel-print@outlook.com
Cllr Geoff Tancred	01379 678568	geoffreytancred@gmail.com
Cllr Roger Kember	01449 768142	rogerkember@gmail.com
Cllr Dick Maisey	01379 730072	maisey686@gmail.com
Cllr Christine Maisey	01379 730072	maisey686@gmail.com

Stoke Ash Village Hall Lottery

We currently have several available numbers, so if you would like to be part of this valuable fundraising opportunity for Stoke Ash village hall, please contact Sheila Coe on the number below.

£1 per week with weekly prize money of £25
based on the correct Saturday Bonus Ball.

For more details: Sheila Coe 01379 678463

DK Appliances Ltd

**Domestic Appliance Repairs,
Sales of New and Reconditioned Machines**



**Finbows Yard, Station Road,
Bacton, Stowmarket IP14 4NH
Telephone: 01449 780398**

M.A. *Heating Services Ltd*

Oil, Gas & LPG Servicing and Repairs

01379 783427

Wickham Gate, High Street, Gislingham, Eye Suffolk, IP23 8JD

maheating.co.uk



Like us on
Facebook!



Once again it's that time for Harvest and holidays. At the time of writing this forward the harvest has just begun in our village as Michael and his team have started to bring in the winter barley and our other farmers who have cattle have also been pleased to harvest a good hay crop this year so hopefully we will have a happy bunch of farmers. It also looks good for the sugar beet as the leaves look nice and rich so we hope now with plenty of sun the roots will sweeten up and provide a bumper crop.

Those of us who like our holidays are not always too happy when it rains but we all who receive this magazine can speak up for our local farmers who need the rain to grow the crops to feed the animals and ourselves so that we can go to our wonderful local bakeries, butchers and Coop stores to have the fresh food to give to our families.

I know we in Suffolk always talk about the weather but its not surprising really as our livelihood for our families over many generations have relied heavily on the seasons of the year to provide for good growing for harvest. We are privileged to be able to live in the countryside with good healthy air, lush trees and vegetation. Sadly sometimes our local planning people miss the point that for us to live in the countryside we have to have transport.

There is some good news as some of you might have seen. Our representatives, who sit on Council, after being chased by our Parish Council, have rattled the cage at Highways and some new signs are appearing on the A140 and in our village. WE AWAIT the Roman Way sign to be installed again.

Watch this space!

Have a happy harvest one and all, don't forget about all the blessings that we receive and if you are going on holiday, be refreshed and keep safe.

Once again, we say as parish councillors that we are here to help so please, if there is a need, let us know and we will endeavour to help where we can.

Cover picture of Michael Gooderham and his team harvesting last year, supplied by Geoff Tancred

The copy deadline for ALL issues this year will be the 10th of alternate months and for advertisers the 12th

This edition of the newsletter has been produced in good faith but errors and omissions may occur during the process of production. Please let us know if this is the case so that they may be corrected.

Please note that the views expressed in readers letters are not necessarily those of the editors. We cannot be held responsible for the accuracy of material submitted for publication; however we reserve the right to include, edit or omit letters as we think appropriate.

~1869 to 2019~
PALMERS BAKERY
HAUGHLEY
TRADITIONAL HIGH CLASS
FAMILY BAKERS & CONFECTIONERS



**FRESH BREAD & CONFECTIONERY BAKED DAILY BY CRAFTSMEN USING
LOCAL INGREDIENTS & BAKED IN ANCIENT BRICK OVENS**



The Village Green~ Haughley – 01449 673286

Largest Stockist of Tiptree Jams & Marmalades in East Anglia.

Suffolk Honey, Free Range Eggs, Groceries & Local Produce.

Freshly Made Sandwiches & Filled Rolls - Hot Drinks & Bacon Rolls

*Also at Stowmarket, Woolpit, Stanton, Ipswich and
Brett's Bakery Needham Market & Freshfills of Claydon*

150 Years of Tradition, Service & Baking



Acorn Boarding Kennels

12 years experience of
running boarding kennels.

Fully Licensed and Insured.

Each kennel has a large
bedding area with underfloor
heating and two large external
runs; within a safe and secure
compound.

2 Year National Diploma in
Animal Care.

Also qualified in the safe use of
veterinary medicines.



Jodi Palmer
Acorns
Wash Lane
Mendlesham
Stowmarket
Suffolk
IP145TD

For friendly
personal care

Opening Hours

Mon—Sat 9.00am to 12.00 noon
Visitors welcome other times by
appointment

For enquiries or to book now,
please phone:

01449 767012

07754 851789



STOKE ASH WI

As usual, our May meeting was to discuss the national resolution and whether to support it at the coming AGM.

The resolution that has been put forward is ‘Clean rivers for people and wildlife’. “The National Federation of the WI urges its members, the wider public, local authorities and Government to make, support and promote applications for official designated bathing sites on appropriate stretches of rivers in their area.” The hope is that by having more designated bathing sites, which have to be safe for people to use, they will be more regularly and more rigorously tested and this will eventually ensure less pollutants will be discharged as the acceptable levels will be much lower than in many places at present. This will obviously have a beneficial effect for wildlife and plant life within river areas.

A vote was taken and unanimously agreed for our representative at the national meeting to accept this resolution on our behalf, with a mandate to use her discretion once she has heard the arguments for and against.

Then, following the normal business of the meeting, a quiz was held, which one of our ladies had kindly put together, appropriately with questions about water. This was a great insight into how little you can know about something you need every day and use all the time. Quite an eye opener!

For our June meeting we had an invitation to have our meeting in the garden of one of our members, and what a great afternoon we had. The weather was exceptional and the surroundings were delightful. The large garden was so pretty, giving us shade and little pockets of flowers and plants to look at amongst the grass and trees. Not preened to within an inch of its life, but natural and frilly around the edges. It was so nice to feel comfortable and relaxed and not like you should stand to attention in case you made the place look untidy. Don’t get me wrong, it’s a treat to go and look at other people’s gardens that they lovingly spend every waking hour inspecting for weeds, and making sure every blade of grass is combed and poked into its correct position, but when you just want to relax and take in the ambience, this was definitely the place to be. The refreshments supplied by our committee members were almost all strawberry themed and definitely all very delicious. Scones, cheesecake and lots and lots of the luscious fruits with cream were available.

The afternoon was a fundraiser for St. Elizabeth Hospice and we were able to send a generous donation soon after our meeting, to help support their valuable work.

Our programme for meetings is published on the village website and on our dedicated WI page (<http://sefwi.org.uk/institutes/stoke-ash>). Please check it out and do get in touch, or just come along on the night. Meetings are held on the second Wednesday of each month at the village hall, starting at 7.30pm. You’ll get a warm welcome.

Finbows Furnishers

**New and Used Furniture
Bought and Sold**

Find us on Facebook

finbows-furnishers@hotmail.com

***Station Road,
Bacton***

Nr. Stowmarket IP14 4NH

01449-781732

Open Tuesday – Saturday 9am-5pm

Optimal Heating

**Father & Son Team
with over 30 years experience**

**Specialist Heating Engineers
Oil, Natural Gas & LPG Servicing and Repairs**



**Tel: 01728 628687
Mobile: 07806 660399**



Stoke Ash & Thwaite Parish Council – report on the Annual Parish Council meeting held 18 May 2023

Chairman and Vice Chairman – Cllr Tony Pulham was elected chairman and Cllr Gordon Leggett elected Vice Chairman. Many thanks were recorded to both for taking on these roles.

Parish Council Vacancies – following the parish council elections on 4 May last there are three vacancies for Stoke Ash. It is important the parish council is fully represented and applications to join the council from Stoke Ash parishioners, 18 years or over, would be very welcome. If you think you may be interested you would be very welcome to attend a meeting to observe the council in action or please do contact the clerk or a councillor to discuss the role. Meetings are held bi-monthly in May, July, September, November, January and March on the third Thursday evening of those months. The role of a parish councillor includes making recommendations to the District Council on planning applications, overseeing the councils' finances, assets, village roads, verges, trees, public rights of way, the facilities available and generally having an interest in the wellbeing of the village and community. Please do get in touch if you think you would be interested, our councillors would be very pleased to hear from you.

Thwaite St George's Footbridge – the footbridge has been totally replaced on health and safety grounds and is fully up and running. Thanks were recorded to Thwaite councillors for commissioning the new bridge.

Thwaite Trees – following concerns raised by parishioners over three trees possibly unsafe or in need of pruning, a tree surgeon has inspected all three and only one, on the allotment field, was found to be in need of pruning. Arrangements will be made for this to be carried out.

Blocked footpath 14 at Hill Farm, Stoke Ash – it was reported the footpath had been cleared and a new bridge and signs installed. Thanks were recorded to Cllrs Mrs Lane and G Tancred for reporting the obstruction to Suffolk CC Public Rights of Way and to Suffolk CC for the work carried out.

Neighbourhood Watch – Cllr Mrs Lane has stepped down as the parish Neighbourhood Watch co-ordinator. Cllr Roger Kember has taken over the role. Thanks were recorded to Cllr Mrs Lane for setting up the scheme for both villages. Parishioners are encouraged to contact Cllr Kember should there be any issues of concern to report.

Stoke Ash Play Equipment – Cllr Tancred was pleased to report installation of the new equipment was completed at the end of March and was in good use.

Date of next meeting – Thursday 20 July 2023, 7.30pm at Stoke Ash Village Hall. Meetings are open to the public.

we have a few
Coronation Medallions
that can be purchased for
£5

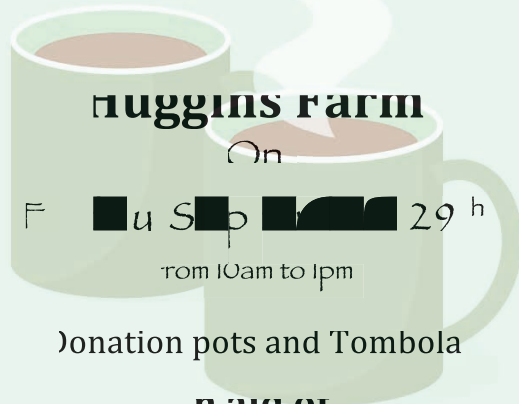
Inscribed
**Presented by Stoke Ash &
Thwaite Parish Council**

These are available from
Geoff Tancred
01379 678568
or
Chris Maisey
01379 730072



Ann & Greg Mudge
would like to invite you to a

Coffee Morning



Muggins Farm

On

Friday 29th

from 10am to 1pm

Donation pots and Tombola

in aid of

Macmillan Cancer Support

MPD TANKS

For all your oil tank needs

Steel and Plastic Tanks
available

Free Estimates
Fully Insured



07708 395889

01449 767820

Pet Photography and Digital art
Transform any photo

Watercolour, Pencil Sketch
Oil Painting
Restore damaged
photos

call John, 07961224515
jfoximaging@gmail.com



KH

Kevin Hollings KITCHEN STUDIO

Unit 14 Lodge Works,
Stowmarket Road,
Old Newton,
IP14 4EE
01449 257160

info@kevinhollingskitchens.co.uk

www.kevinhollings.com



YOUR RELIABLE LOCAL PLUMBER



Mark Jardine
Plumbing & Heating



- All Household Plumbing, Large or Small
- All Work Anglian Water Certified
- 24 Hour Emergency Call Out

Tel: 01728 628291 Mob: 07854 924 801

Email: mgjardine@btinternet.com

You are invited to come for a lunch and chat

'We'll meet again' monthly lunch club

The New Youth Hall Chapel Lane, Stoke Ash IP23 7EU

Time 12.30 for 1pm

We trust that you are keeping well. For your own wellbeing it would be good if you could organise for yourself a Lateral Flow Test before the event if you can. Masks and hand sanitiser are always available at the Hall.

August 23rd and September 27th (no meal in October)

The meal is primarily for those over 65 in the Stoke Ash & Thwaite area who would like to meet up with others who may be living alone and would like to have a meal and chat

RSVP to Gordon or Janis on 01379 678450 Mobile 07745 365583

If you require transport please ask. We meet the 4th Wednesday in the month

Supported by Stoke Ash & Thwaite PC and Stoke Ash Baptist Church

**All are welcome at our
regular activities***


**Stoke Ash
Baptist Church**
CIO

Sunday 10.30am

Morning Service

Tuesday 7.30pm

Prayer, Share & Bible Focus

Regular activities in normal times: Friends & Neighbours, Community Breakfasts & Lunches, Home Groups, Christianity/Discipleship Explored Courses & Holiday Club.

Please join us - you will receive a warm welcome.

**More details on our website at www.stokeashbaptist.co.uk
Stoke Ash Baptist Church (SABC), Chapel Lane, Stoke Ash, Suffolk IP23
7EU Tel: 01379 678450 • Email: gel-print@outlook.com**

Brockford Sidings Dog Park

A fun and secure place to exercise your dogs in the countryside!
Bring your own dogs' toys or make use of our supplied agility equipment.

Park inside the field so no need for a lead! Shelter for rain cover and a clean water tap for dog bowls and washing your dog off also available.

Bookings online only at:
www.brockforddogpark.co.uk

Location: Brockford Sidings, Brockford Green, IP14 5NN

D. I. ALSTON LTD.

THE CEDARS, CEDARS HILL, BROCKFORD. IP14 5PQ

OFFICE AND WORKSHOP LETS

SELF STORAGE CONTAINERS

(20FT, £100 PCM inc. VAT)

BROCKFORD SIDINGS HOLIDAY LETS

BROCKFORD CAMPSITE

DOG EXERCISE PARK

FOR ALL ENQUIRIES CONTACT:

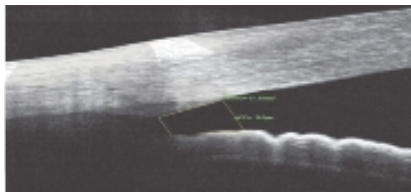
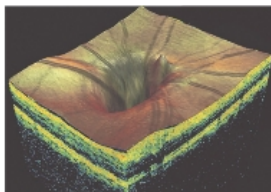
TONY ALSTON
01449 766231
dialstonltd@outlook.com



Adkins Opticians

traditional service, modern standards

**Start of the art 3D
OCT eyecare now available**



2 Market Hill, Diss IP22 4JZ

Tel: 01379 650899

www.adkinsopticians.co.uk

Mon - Fri 9:00am - 5:00pm

Sat 9:00am - 1:00pm



ROOFLINE+PLUS

Look Up!

BUILDING & ROOFING CONTRACTOR

EST 1985

ROOFING & ROOFING REPAIRS

**CHIMNEYS REBUILT,
REPAIRED, REPOINTED
OR REMOVED**

ALL WORK GUARANTEED & FULLY INSURED

CALL US (WE ALWAYS RETURN CALLS):

Email: roofflineplus2@gmail.com

**GUTTERING / FASCIAS / FLAT ROOFING
ROOF WINDOWS INSTALLED**

FREE NO OBLIGATION QUOTE



**01449 763218
07500 823292**

The Walnut Tree

THWAITE

Suffolk's Veggie Pub

Open 6 days a week for
Coffee • Lunch • Dinner
Children and dogs welcome



T: 01449 766003 www.thewalnuttreethwaite.com

JH Vaudrey & Son Ltd



Phone: 01379 678459 Fax: 01379 678458 Email: info@jhvaudrey.co.uk



- Grain stores up to 80,000 tonnes
- Grain handling systems to 500 tonnes per hour
- Groundworks, drainage and concreting works
- Conveyors, elevators, dryers, fans and ducting
- Onion, potato and cold stores
- Steel framed buildings
- Structural repair and building maintenance
- Refurbishment

JH Vaudrey & Son Ltd have been supporting farmers with their building requirements since 1993 and have a wealth of expertise when it comes to the requirements of today's agri business. JH Vaudrey & Son Ltd can provide grain stores complete with the most up to date grain handling equipment, silos, dryers, and straw barns. We also provide a maintenance service to all properties and farm buildings.

JH Vaudrey & Son Ltd provides a complete design and build service and will even take care of the planning application for you. We will be pleased to hear from you and offer a friendly reliable service. To discuss your requirements further telephone 01379 678459.



www.jhvaudrey.co.uk

Lamberts Service Station Ltd

Shop Green, Bacton, Stowmarket, IP14 4LG, Tel: 01449 781260 Mobile: 07834 778116

www.lambertsservicestationltd.com Email : lamberts.1@btconnect.com



Car Service, MOT Testing and Repairs

We have a fully equipped workshop where all manner of repairs can be undertaken. An MOT testing station and a Body Shop where we can undertake Insurance accident repairs, general repair work and re-sprays. We also operate a Recovery service which includes Home Starts. We are one of the few remaining rural Petrol Filling stations and offer forecourt attended services. **Please visit our website for full list of services.**

WORKSHOP

Service all Makes and Models
Air Conditioning
Engine Diagnostics
Fault Finding
Engine Management Lights
Exhausts
ABS

MOT TESTING

MOTs while you wait -
By Appointment
Petrol
Diesel
Electric
Hybrids

BODYSHOP

Accident Work
Body Work Repairs
Paint Work
Re-Sprays
Welding

ITEMS STOCKED

Tyres
Batteries
Wiper Blades
Bulbs
Calor Gas

RECOVERY SERVICE

Home Starts
Breakdown
Accident Recovery

FORECOURT SERVICES

Petrol and Diesel
Tyre Pressure and Levels
Checked
Bulbs Fitted While You Wait
Antifreeze Check

**Competitive prices on Tyres - Quotes given
Free no obligation Estimates on work needed**



Find us on Facebook - www.facebook.com/lambertsservicestation



**Safe & Sound
Hygiene and Pest Control**

Is your garden over run with Moles ?

Do you have a wasp nest ?

Are your paddocks over-run with rabbits ?

For ALL your Domestic / Commercial Pest Control.



Woodworm treatment available.



No obligation – free survey/quotes.

Pest infestation can damage your health and your home. Recent surveys show that numbers of mice/rats and bed bugs found in UK homes are on the rise. As Local Authorities are cutting back on free pest control services. We are here to offer you a service at the right price.

Please call for a chat on 01379788865 • 07809226109 • 07518731106

www.safeandsoundhygieneandpestcontrol.co.uk



Andrew Bingham
INDEPENDENT FUNERAL SERVICE

Local Caring Independent Funeral Service

24 Hour Personal Service * Private Chapel * FREE Parking

www.andrewbingham.co.uk

01449 771666

The Nutshell, Milton Road South, Stowmarket, IP14 1EZ



***** GISLINGHAM PLAYGROUP *****



We provide a safe, warm, friendly and caring setting for children aged 2-5 years, in a brand new purpose built building on the same site as Gislingham CEVCP School, with whom we work closely to provide an excellent education.

Breakfast Club 8.00am - 8.45am

Morning 8.45am to 11.45am, Lunch Club 11.45am to 12.45pm

Afternoon 12.45pm to 3.45pm

"Children's welfare, learning and development is fully supported by the highly motivated staff" Ofsted 2012

Please visit our website www.gislinghamplaygroup.com or phone us on 01379 788934

Saturday July 8th saw the Celebration of Kim Aldridge's 60th birthday party at Huggins Farm, Stoke Ash.

A wonderful balmy summers evening was enjoyed by all and the Aldridges provided all that was required for an evening celebration with Food, Drinks and music to dance the night away.

As you can see by the pictures provided, everybody had a good time to chat, eat, drink and dance, with the dogs joining in for any scraps of food that might be given away!

Thanks to Kim & Greg for putting on a superb evening.





F. G. BROWN – OPTICIANS
Denmark House, 41 Bury Street,
Stowmarket.
Tel:- 01449 612812/674030

As independent opticians we offer a more personalised eyecare service that you can trust for all the family including:-

**Optomap retinal examination
Colorimetry**

**A wide range of competitively priced frames
and spectacle lenses**

Contact lenses

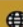
Prescription and non-prescription sunglasses


Your sight care is our priority


nexusheat^{flame}




Nexus Heat offer a complete supply and installation service across a wide selection of traditional and contemporary Woodburners, Multi-fuel, Pellet and Gas stoves. Our beautiful showroom is always filled with a varied display from top manufacturers such as Heta, Parkray, AGA and Bellfires amongst others.

 www.nexusheat.co.uk

 (01379) 671168

 info@nexusheat.co.uk

 Maltings Barn, Hinderclay Rd, Wattisfield, Diss, Suffolk, IP22 1NF



With journeys as great as the destinations, no matter which Holiday or Day Trip you choose we are confident you will return home with wonderful memories of your time away with us!

Galloway has over 57 years' experience and are proud to go the extra mile to put you, our customers, at the core of what we do.

We also provide Private Coach Hire, for yourself, family, friends, or social groups. From the booking, through to the transport, hotel, entrance tickets and more, we have it all covered so all you need to worry about is being at your collection point!

EYE SAINTS COMMUNITY BOULES CLUB

BOULES/PETANQUE

All Ages and Abilities Welcome

WEDNESDAYS / SUNDAYS

10.00am To 12.00 pm

**FUN IS THE ORDER OF THE DAY
AND WE ALSO HAVE A LEAGUE TEAM
FOR MORE COMPETITIVE FOLK**

Contact: **Eirajane: 01379 678086**
email: **eirajane@gmail.com**
lan: **01379 870367**

Find us on Facebook or Instagram
or
Pop along and have a go

Galloway



**DAY TRIPS - UK & EUROPEAN HOLIDAYS
PRIVATE HIRE - GROUP TRAVEL**

HOLIDAYS

Galloway combine the best destinations with carefully planned itineraries for you to choose from. Perhaps you'll join us on a tour on the Rhine or experience the gourmet delights Normandy has on offer. Maybe you're planning a holiday closer to home this year?

You could join us as we visit, Yorkshire, Derbyshire, Kent, Wales, Scotland and many more locations. Look out for our festive breaks too, All of which are very popular! Your holiday really does start from your door with our included door to door service and our inclusive itineraries mean you won't have any hidden costs.

DAY TRIPS

We visit Theatre Shows, Flower Shows, Historic Houses, Castles, Wildlife Parks, Towns, Cities, Gardens, Seaside Resorts, Guided Tours, River Boats, Live Events and so much more....
See our full list of trips online.



Use code **SATDAY23** to save £2.50pp on Day Trips and use code **SATHOLIDAY23** to save £10pp on Holidays.

0330 1000 360 - info@gallowayeuropean.co.uk - www.travel-galloway.com

MID SUFFOLK MOBILITY and CARE EQUIPMENT CENTRE

Finbow's Yard, Bacton, Nr Stowmarket, Suffolk IP14 4NH Tel: 01449 781804

Open: 9.00am to 4.00pm Tuesday to Saturday

Everything you need to help you when you are out and about



Plus we stock a wide range of mobility and ability aids to assist you around the home including: Recliner Chairs, Bath Lifts, Shower Stools, Large & Small Rollators, Walking Frames and much more.

**Stockists of DB Wide-fitting
Shoes and House Slippers**



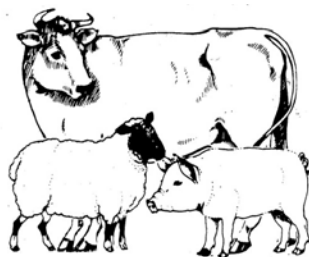
**for Stairlifts phone
0800 0169 231**

For further information or advice please telephone Mavis or Mark on 01449 781804

Web: www.midsuffolkmobility.co.uk

Email: msmobility@btconnect.com

David Dunnett Family Butcher



Locally Sourced Meats

British Beef • Free Range Pork
Lamb • Chicken • Game • Cooked Meats

Home Made Pork Sausages

Our Speciality

Including:- Plain Pork • Gluten Free
Cracked Black Pepper • Pork & Apple
Cumberland • Pork & Leek • Pork & Ale
Sweet Chilli • Smoky BBQ

Home Made Burgers

Beef & Onion • Pork & Apple
Lamb & Mint • Chicken • Gluten Free

17 Church Street, Eye

Tel: 01379 870155

OPENING HOURS

Monday	7.30 am - 5.00 pm
Tuesday	7.30 am - 5.00 pm
Wednesday	7.30 am - 5.00 pm
Thursday	7.30 am - 5.30 pm
Friday	7.30 am - 5.30 pm
Saturday	7.30 am - 4.00 pm

Tank Change Limited

Does your Oil Tank need replacing?

We are your local oil tank installer established since 1989
with over 16,000 installations to date.

- New oil tank installations, relocations and servicing
- Emergency pump out service available for leaking oil tanks
- Kingspan Titan polyethylene tanks and steel tanks held in stock
- OFTEC registered
- Kingspan Titan Accredited
- Fully insured
- Parish magazine discount
- Free surveys



Tel. 01449 781210

Email: enquiries@tankchange.co.uk

www.tankchange.co.uk



Registered
Business





Susan Whymark Funeral Service Ltd

Independent and Family Run



Member of the National
Association of Funeral Directors

see our reviews at www.susanwhymark.co.uk
email: susan@susanwhymark.co.uk

Susan Whymark Funeral Service

Independent, Family Run
Funeral Service

*erving Eye, Harleston and the
surrounding areas Since 2004*

Chestnut House, 12 Progress Way,
Eye, Suffolk, IP23 7HU
Tel: 01379 871168 (24hr)

Ley House, 11a London Road,
Harleston, Norfolk, IP20 9BH
Tel: 01379 851253 (24hr)



**GIPPING PRESS ARE
PROUD TO PRINT THIS
PUBLICATION**

Tel: 01449 721599

Email: enquiries@gippingpress.co.uk

www.gippingpress.co.uk

**DESIGN • PRINT • LARGE FORMAT
MAILING • PROMOTIONAL • SCANNING**



Landscaping
Grass Cutting
Mower Servicing
Garden Maintenance
Hedge Cutting
Fencing Work
Tree Surgery

Seasoned Firewood
by the full or half load

Call 01379 783093
for further details
Or to arrange a free quote

ALL SAINTS CHURCH STOKE ASH WITH THWAITE

WORSHIP

Sunday 13 August at 10.30am – Worship for All service.

All are welcome – refreshments and chat afterwards.

For all other services around the Benefice, please refer to the village and church notice- boards. All details are also on-line and on Facebook: <https://www.facebook.com/groups/southhartismerechurches>

RIDE AND STRIDE

Saturday 9 September – Suffolk Historic Churches Ride and Stride.. This annual sponsored event is on the horizon, to raise money to help with grants towards keeping our beautiful churches and chapels repaired. If you would like to help by cycling or walking round local churches, sponsor forms will be available from the church porch.

Money raised by each participant will be shared equally between Suffolk Historic Church Trust and your nominated place of worship (hopefully All Saints Church, Stoke Ash)!

BOOKS AND JIGSAWS

Books and jigsaws are always on sale in the church porch. (The outer door is always unlocked, but is stiff to open)

BAPTISMS and WEDDINGS

For all enquiries, please contact Rev. Julia on:

01379 678064 or 07850 492212,

or email at rev.julialall@gmail.com

Thwaite Lottery

Thwaite 50 Lottery has monthly prizes of £25, £20 & £15 and an annual Christmas draw of at least £100 and non-monthly winners have a complementary prize.

To join us during the year membership is £5 per month.

We currently have 32 members.

The profits from the lottery go towards the upkeep and prospective development of St Georges & The Old School Room

If you would like to join us, please contact Chris Maisey

Maisey686@gmail.com

01379 730072

07748 844019



News from the Rectory: Leaving Well

Dear Friends,

This month I am writing to you all with very mixed emotions as I prepare to leave the churches and communities of South Hartismere.

I have been reflecting on an inspirational quote illustrated by Revd Lauren Moore:

‘Life is a balance of holding on and letting go’

I have been here for 10 years, and I have always known that I would recognise when it was the right time for me to leave, and that time is now. As I let go of my duties and responsibilities, I will always hold on to the fond memories I have of my time here. However, I am not ready to retire, so my next post will be a good stepping-stone for me between full-time ministry and retirement.

The new post will be part-time, about 4 days a week plus Sundays, and it is a small rural benefice close to Bury St Edmunds, with 3 parishes, 4 churches, and 1 Church of England Primary school. It was a difficult decision to make at first, but I feel very affirmed that it was the right one.

It is time for someone new to lead you through the next chapter in the life of our churches, and to build on all that we have achieved together. I am so grateful for all the encouragement and support I have received, and this time with you has been one of the happiest times in my life.

My last service here will be **on 3rd September at Thorndon Church at 10.30am, followed by a picnic lunch.** My licensing service in the Rougham Benefice will be on **5th October at 7.00pm**, at Rougham Church - and I would love it if you could join me at either or both of those services.

In the meantime, I leave you with Paul’s words to the Corinthians:

Finally, brothers and sisters, farewell. Put things in order, listen to my appeal, agree with one another, live in peace; and the God of love and peace will be with you. And the grace of the Lord Jesus Christ.

And the love of God, and the fellowship of the Holy Spirit be with all of you.

With love and prayers,
Julia

RECIPE TIME!

Moist Lemon Cake

110gr/4oz butter (or good cooking margarine)

175gr/6oz caster sugar

175gr/6oz self raising flour

1 level teaspoon baking powder

2 large eggs

Grated rind of 1 large or 2 small lemons

75ml/2½ fluid oz milk

Preheat oven to 180C 350F Gas Mark 4

Put all ingredients in a food processor and whiz until really smooth (the mixture is quite runny). Pour into prepared 2lb loaf tin and bake for 40 -50 minutes.

Meanwhile dissolve 2-3 tablespoons of granulated sugar in a bowl with the juice of the lemon(s). Place cake on a cooling rack and prick all over with a skewer and spoon over the lemon syrup. Leave in the tin until cold. Freezes well.



**STOKE ASH VILLAGE HALL
FOR HIRE**

**For private parties, anniversaries,
club meetings and classes, etc.**

- Comfortable seating for fifty
- Spacious kitchen and modern cooker,
crockery & cutlery
- Ample parking
- Good value – low charges
£8.00 per hour, new bookings £10 per hour

Book with Brenda Lock 01379 678383



Come to **MENDLESHAM** for your

Fish 'N' Chips



and...

- * Pizzas
- * Spring Rolls
- * Chicken
- * Pasties

- * Pies
- * Burgers
- * Spare Ribs
- * Curries

- * Rice Dishes
- * Kebabs
- * Sausages
- * Pickles & Peas

* Vegetarian Dishes * Children's Menu

We also cater for Functions

Opening Times

Monday

Tuesday

Wednesday

Thursday

Friday

Saturday

Sunday

Lunch

Closed

11.30am – 1.30 pm

Closed

11.30am – 1.30 pm

11.30am – 1.30 pm

11.45am – 1.00 pm

Closed

Evening

Closed

4.30pm – 7.30pm

4.30pm – 7.30pm

4.30pm – 7.30pm

4.30pm – 8.00pm

4.30pm – 8.00pm

Closed

Telephone: 01449 766987

Frog's Farm *Eggs & Flowers*



**Hello and Welcome from Frog's Farm
Located on the A140 see our signs.**

We welcome all visitors and stock 6 box Eggs and trays
along with sacks of Potatoes and Bird Seed.

Available to order "Wild Duck" - Please call us

Our phone number is 01379 678459

**Usually open 10am to 4pm
give us a call if you would like to know more.**

QUIET ACRES



Boarding Kennels & Cattery

Clay Lane, Braiseworth, Eye
IP23 7DZ
(Just 2 minutes off the A140)

Tel 01379678374
www.quietacres.co.uk

Stoke Ash & Thwaite Newsletter Advertising Rates

The following rates are effective
from 1st January 2023

per annum (6 issues)

Full Page . . . £70

Half Page . . . £45

Quarter Page . . . £35

**Adverts in colour – Cost per annum
(6 issues)**

Full Page . . . £100

Half Page . . . £60

Quarter Page . . . £40

Set up fee for all advertisement £8.00
Subsequent amendments are also charged at £8.00

**Leaflets / Advertising flyers inserted
cost £12.00 per item**

Contact K Smith on 01379 678 197
or email stokeash@supanet.com

J. LAWES

STATION ROAD, BACTON

HARDWARE · IRONMONGERS GARDEN AND BUILDERS SUPPLIERS

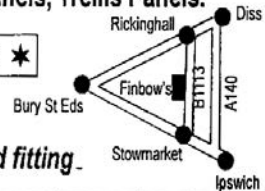
Including Sand, Ballast and Cement in large or small quantities.

FENCING · GATES · GARDEN SHEDS · PEAT / COMPOSTS · LAWNMOWERS
CHAINSAWS · PAINTS · HAND TOOLS · POWER TOOLS - HD & DOMESTIC
ELECTRIC CABLE & FITTINGS · DOUBLE GLAZING · PVC SHEETING

All types of Timber. Timber prepared. Lap Fencing Panels, Trellis Panels.

★ Granular and Nut Salt ★ Timber Patio Decking ★

*Plywood, Chipboard & Hardboard Sheeting,
Drainpipe and Fittings, Full range of Copper Pipe and fitting.*



Open Mon - Sat 8.30am to 5.30pm

*Delivery on all items (including Calor Gas)
- Credit Cards accepted*

**Tel: Stowmarket
01449 781452**

Useful Contact Numbers

Health Centres

Mendlesham	01449 767722	Eye	01379 870689
Suffolk Doctors on call			01473 299622
Emergency Dental Services			01473 715623
Drugs Advisory Council			0800 776600
Police			101 & 999
Citizens Advice Bureau	01449 676060	or	01379 651333
Veterinary Surgeon		(Eye)	01379 852146
Electricity Power Failure UK Power Network			0800 7838838

Suffolk County Council – switchboard			01473 583000
Emergency contact outside office hours			0845 6066067
Trading Standards			0845 6032814
County Councillor Andrew Stringer	07774 199061 & 01449 780339		
	Email	andrew.stringer@suffolk.gov.uk	

Mid Suffolk District Council

District Councillor - Cllr Tim Weller			07928 512586
Palgrave Ward	Email	tim.weller@midsuffolk.gov.uk	

Magazine

Advertising: Ken Smith	stokeash@supanet.com		01379 678197
Treasurer: Tony Pulham	tony@hpfltd.co.uk		07850 385914
Distribution: Ann Warr-Wood			01379 678329
	Chrissy Maisey & Dick Maisey		01379 730072

Website Geoff Tancred stokeashandthwaite.onesuffolk.net

Printed by Gipping Press Ltd Needham Market 01449 721599



The Hair Studio at Mendlesham Ltd

BEV & KIRSTY

FORMERLY CURL UP & DYE

**WE ARE BOTH FULLY QUALIFIED WITH OVER 40 YEARS OF
EXPERIENCE BETWEEN US**

**PROFESSIONAL ADVICE AND PERSONAL ATTENTION IN
ALL ASPECTS OF HAIRDRESSING**

**PERMS: COLOURS: HI-LITES: CASUAL PUT-UPS
WEDDING HAIR: RESTYLES Etc
FOR ALL THE FAMILY AT UNBEATABLE PRICES
SENIOR CITIZEN RATES TUESDAY ONLY
EAR PIERCING AVAILABLE**

EASY OFF ROAD PARKING

**LOYALTY CARD, STAMP EVERY SERVICE
ALL DEBIT/CREDIT CARDS ACCEPTED
GIFT VOUCHERS AVAILABLE**

**FOR ALL ADVICE AND APPOINTMENTS
CALL US ON 01449 766977
OR VISIT US AT**

**Ropers Farm, Church Road, Mendlesham, Suffolk IP14 5SF
www.hairstudioatmendlesham.co.uk**